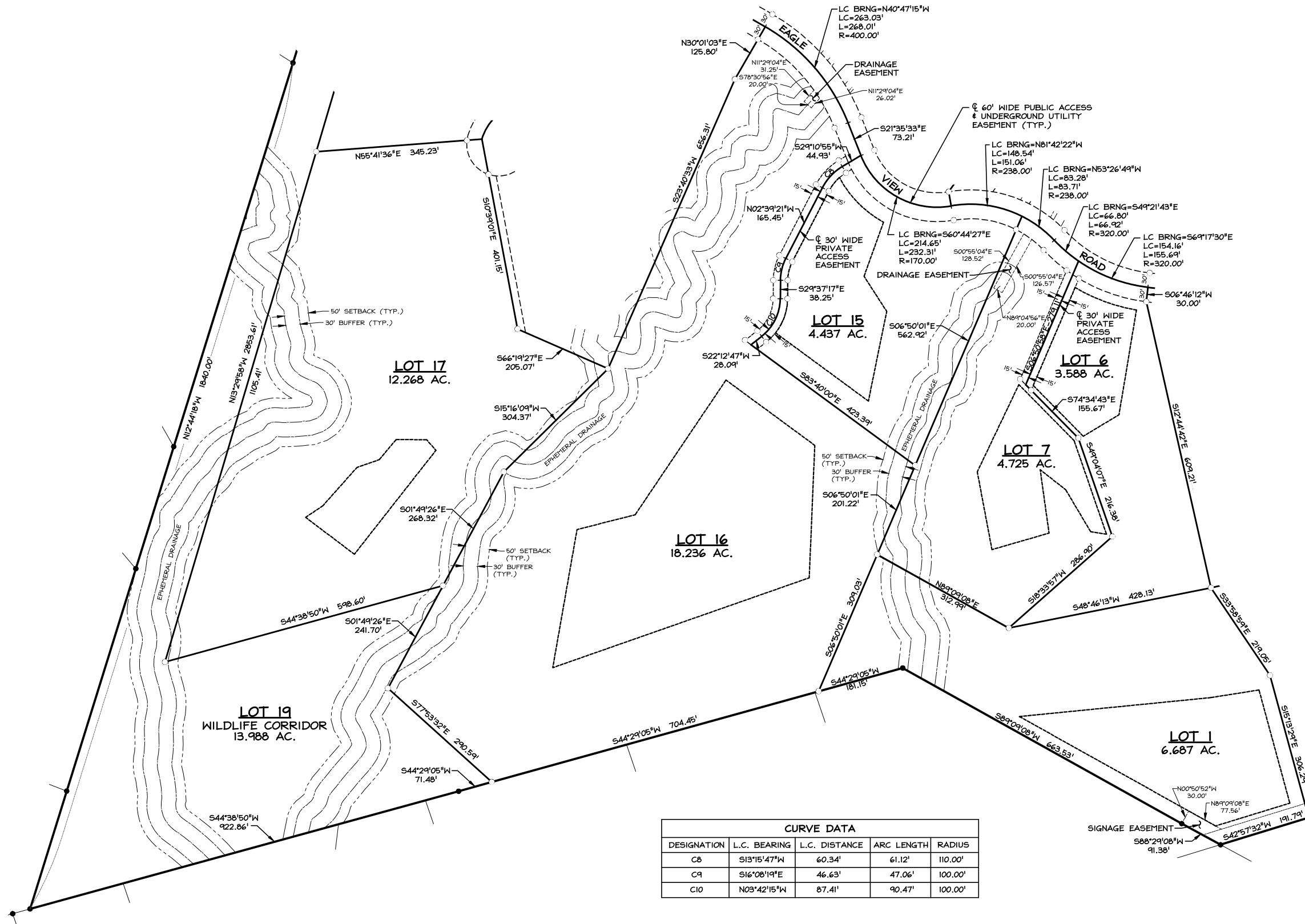


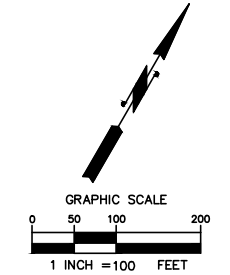
CANYON FERRY CROSSING SUBDIVISION PLAT

PHASE V

LOCATED IN THE NORTH ONE HALF AND THE SOUTHWEST ONE QUARTER OF SECTION 1
TOWNSHIP 10 NORTH, RANGE 1 WEST, P.M.M., LEWIS AND CLARK COUNTY, MONTANA
SHEET 3 OF 4



CURVE DATA				
DESIGNATION	L.C. BEARING	L.C. DISTANCE	ARC LENGTH	RADIUS
C8	S13°15'47"W	60.34'	61.12'	110.00'
C9	S16°08'19"E	46.63'	47.06'	100.00'
C10	N03°42'15"W	87.41'	90.47'	100.00'



REDUCED PRINT
APPROX. ONE HALF SCALE
\\GREG\Users\Public\Project_Data\068600\dwg\1438.dwg 11/17/2015 9:17 AM

PRELIMINARY

DATE: 1439	DATE:
DRAWN BY: CLH	REVISION:
CHECKED BY: 06-86-00	SHEET: 3 OF 4
1/4 SEC. TWP. RGE.	
1 10N 1W	
LEWIS & CLARK COUNTY P.M.M.	

Prepared By
NORTHLAND ENGINEERING
ENGINEERS - SURVEYORS - PLANNERS
HELENA, MONTANA
PHONE: (406) 442-8108